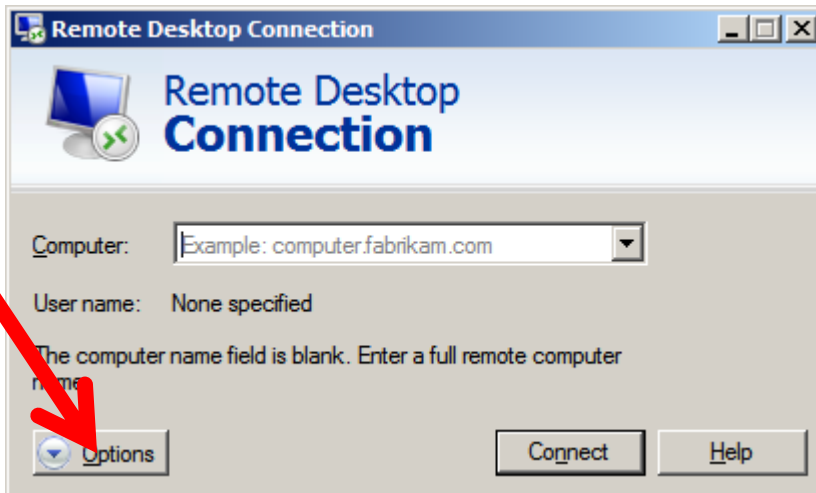
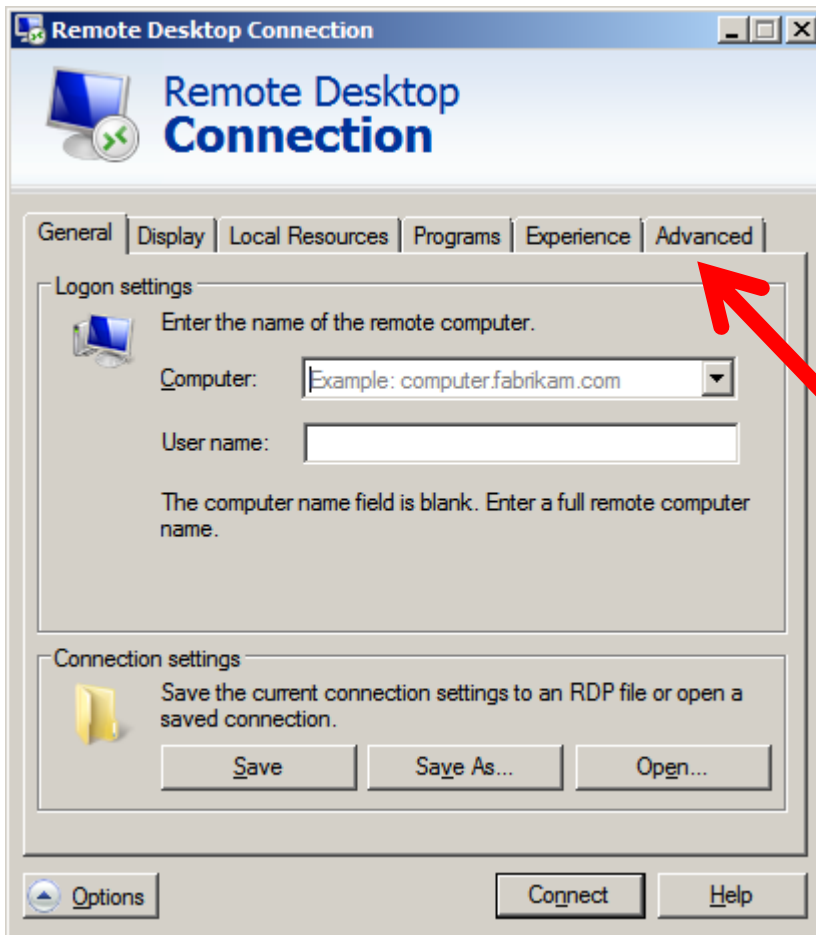


Accessing All Saints' Academy Remote Desktop Services

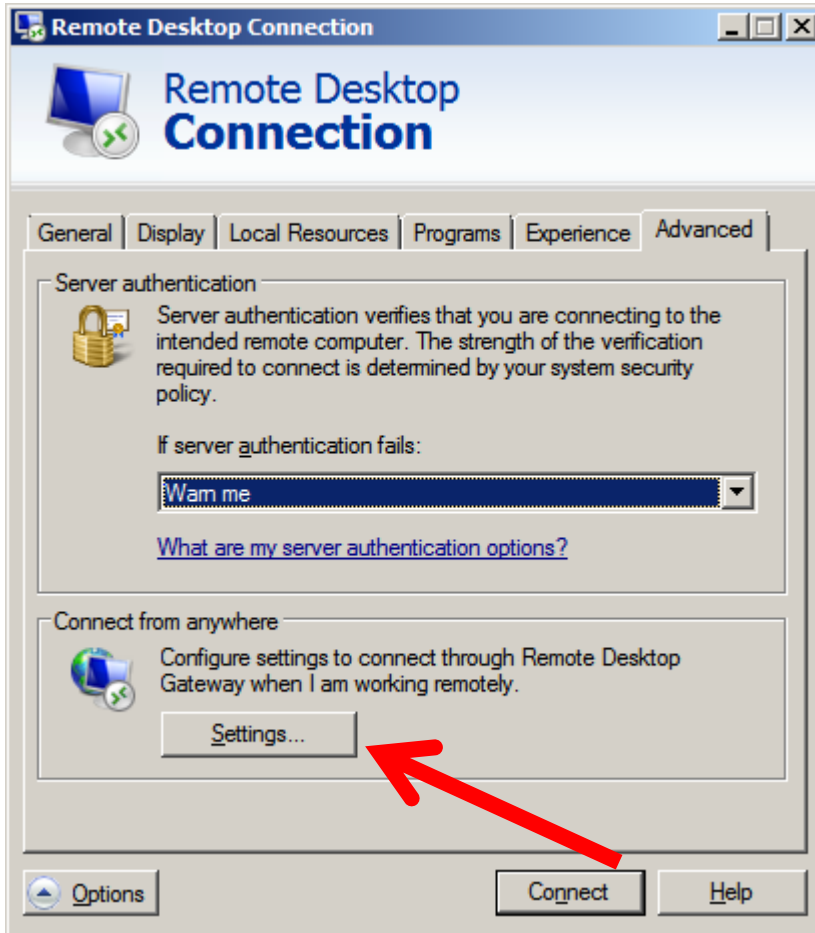
1. Launch the Remote Desktop Connection application from Start > Accessories > Remote Desktop Connection
2. Click Options



3. Click Advanced



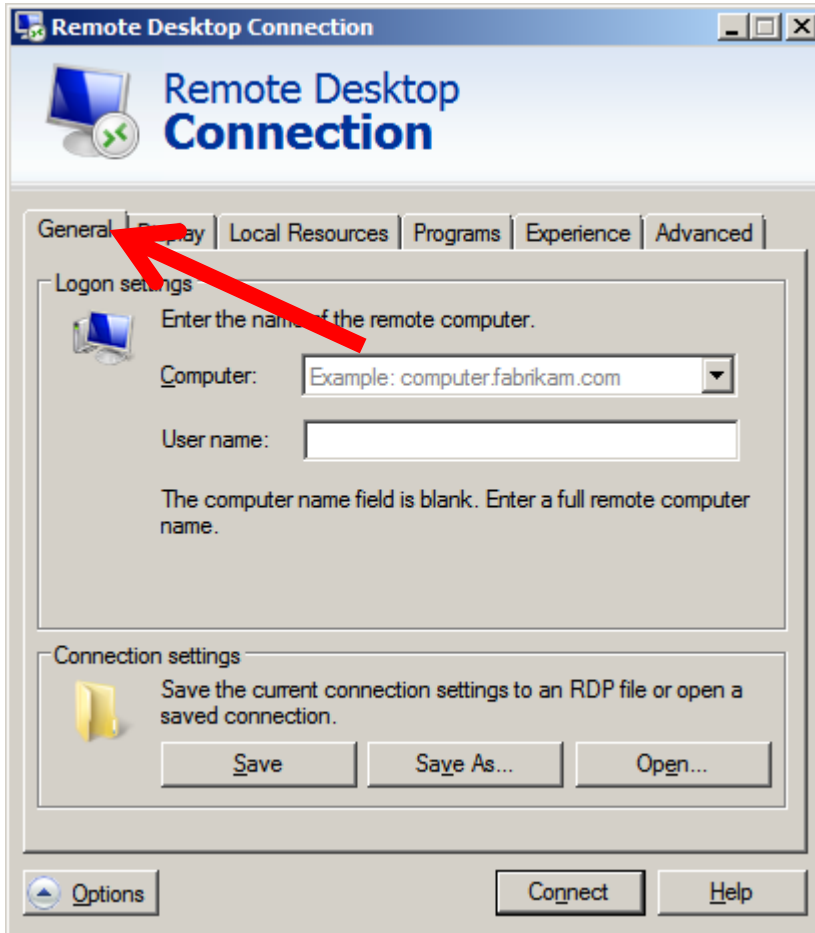
4. Click Settings



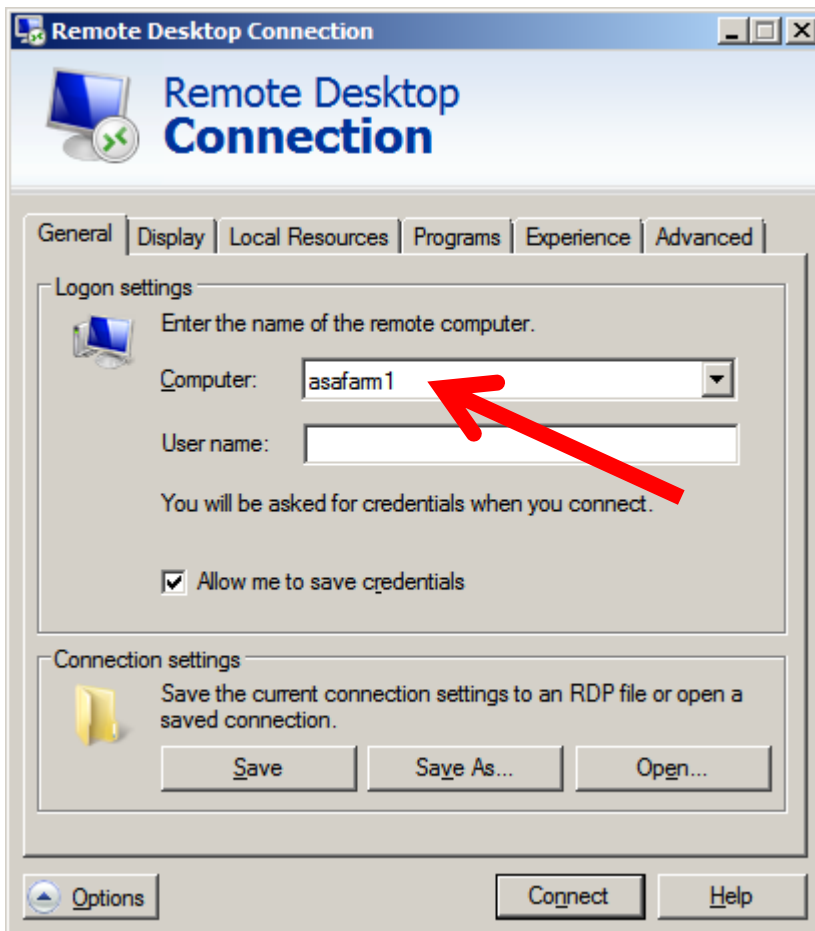
5. Enter **remote.asachelt.org** in the server name field. Configure the options as detailed below, then click OK



6. Click the General Tab



7. Type **asafarm1** in the computer box



8. Click Connect
9. Enter your username in the format **allsaints\username**

10. Enter your password and click OK

11. If prompted to accept a Certificate for ASA-RDS-001 or ASA-RDS-002, tick the “Don’t ask me again” box and then click Yes.

